

SF FLOOR NW

category:low-maintenance vinyl sheet
with cushion backing

No need to apply the wax. Just by easy cleaning, beautiful appearance can be maintained for long. SF FLOOR NW is a 2.8mm vinyl sheet with foamed layer which has excellent shock absorption and durability.



Long Life

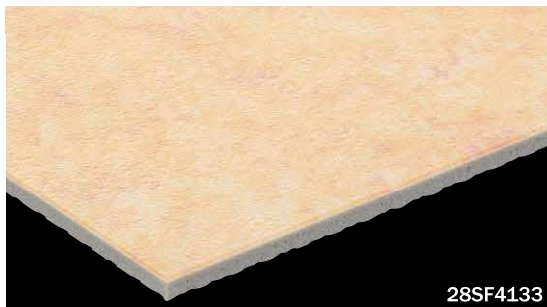


Weight Saving
Easy Maintenance



Specification	overall thickness	2.8mm	width×length	1820mm×9m
	others	Antibacterial & Antivirus Finished / Highly Durable UV-Coated Surface		
JIS Registered No.	NO.GB0507188 (JIS A 5705 Vinyl Sheet Flooring)			
Packing	9m/roll			
Net Weight	32.5kg/roll			
Performance	Wear Resistance	(EN649) Group T		
Recommended Adhesive from TOLI	dried mortar and concrete	Eco Royal Cement, Eco AR600		
	heavy traffic use	Epo Gray S, US Cement		
	The wards and living rooms where beds with double-row casters are used	Epo Gray ST, US Cement, US Cement (less-smelly), US200		
	humid mortar and concrete	Epo Gray ST, US Cement, US Cement (less-smelly), US200		
Welding/Seam Finish	TOLI UNDERLAY SHEET US Cement, US Cement (less-smelly), US200			
Welding/Seam Finish	<ul style="list-style-type: none"> Welding rod for heat-welding (antibacterial finished) is available on a color-by-color basis. JOINT SHIELD method (JS Method) by TOLI JOINT SHIELD is also applicable. 			
Notes on Installation	<ul style="list-style-type: none"> Seams should be heat-welded or finished with TOLI JOINT SHIELD. TOLI JOINT SHIELD can also work on the top of TOLI UNDERLAY SHEET, but when partial weight will be put on the floor (such as heavy stuff or casters), the seam joints should not be finished with TOLI JOINT SHIELD. When you install 2 different sheets, each edge should be jointed at the seam. (Do not cut in the middle of the sheet.) Please do not use the urethane adhesive other than US Cement, US Cement (less-smelly), US200. For one week after installation, direct sunlight, sudden change of temperature due to air conditioning, and water washing should be avoided. As the sub-floor material, the underlayment like TOLI UNDERLAY SHEET (page 283) is also workable. Apply the same adhesive for both upside and downside of the underlayment. Please note that the durability to dynamic load will be degraded when you install with the underlayment. When you install SF FLOOR NW in the places where rollaway beds are used (e.g. a patient room of the hospital, a living room of the welfare facility and so forth), the epoxy adhesive such as TOLI Epo Gray ST and urethane adhesive such as US Cement, US Cement (less-smelly), US200 should be used even if the humidity of the sub-floor is less than 8%. 			
Recommended Way of Maintenance from TOLI	<ul style="list-style-type: none"> No need to apply the maintenance wax on the surface. Clean the floor every day with an auto scrubber or a wet rag wrung out tightly. Use the detergent for fixed contamination. Even if the wax is applied on the surface, it does not affect the quality of NW series. For a large facility, an abstergent auto scrubber is more recommendable. High speed buffing should be avoided. Otherwise highly durable UV coating will be abraded. 			
Custom Order	If you ask for a different thickness, please contact TOLI sales rep.			
Others	<ul style="list-style-type: none"> At the entrance of the building, the dust control mat should be laid in order to avoid soils and sands from outside. To structure the heavy duty floor, "sub-floor", "load", and "adhesive" will be 3 important factors. Please pay careful attention to the combination of strength of sub-floor, type of adhesive, and load put on the floor. Please be aware that some rubber casters might cause color-contamination. Please note that the product has the indigenous odor from its materials. 			

MADE IN JAPAN



28SF4133



28SF4101 HERRINGBONE



28SF4102



28SF4103



28SF4104 WALNUT



▲ 28SF4101/28SF4120

SF FLOOR NW

category: low-maintenance vinyl sheet
with cushion backing



28SF4105 OAK



28SF4106 OAK



28SF4107 WALNUT



28SF4108 WALNUT



28SF4109 CYPRESS



28SF4110 OAK



28SF4111 OAK



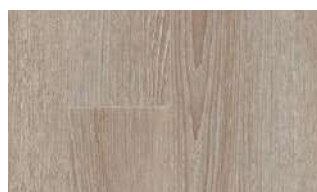
28SF4112 CHERRY



28SF4113 CHERRY



28SF4114 ASH



28SF4115 ASH



▲ 28SF4108



▲ 28SF4115

Vinyl Sheet

◆ Durability to Rolling Loads <in accordance with JIS A 1454: Caster Rilling Test>

SF FLOOR NW		
Time until the floor covering swells	More than 180 minutes (1st stage test by wheels with 110mm Φ)	Less than 30 minutes (2nd stage test by wheels with 46mm Φ)

1st stage test: JIS A 1454: Caster Rilling Test (load per unit area: approx. 900N/cm²)
2nd stage test: Independent test by TOLI (load per unit area: approx. 2,700N/cm²)

SF FLOOR NW

category:low-maintenance vinyl sheet
with cushion backing

No need to apply the wax. Just by easy cleaning, beautiful appearance can be maintained for long. SF FLOOR NW is a 2.8mm vinyl sheet with foamed layer which has excellent shock absorption and durability.



Long Life



Weight Saving
Easy Maintenance



Specification	overall thickness	2.8mm	width×length	1820mm×9m
	others	Antibacterial & Antivirus Finished / Highly Durable UV-Coated Surface		
JIS Registered No.	NO.GB0507188 (JIS A 5705 Vinyl Sheet Flooring)			
Packing	9m/roll			
Net Weight	32.5kg/roll			
Performance	Wear Resistance	(EN649) Group T		
Recommended Adhesive from TOLI	See page 284.			
Welding/Seam Finish	See page 284.			
Notes on Installation	See page 284.			
Recommended Way of Maintenance from TOLI	See page 284.			
Custom Order	See page 284.			
Others	See page 284.			

MADE IN JAPAN



28SF4116 MAPLE



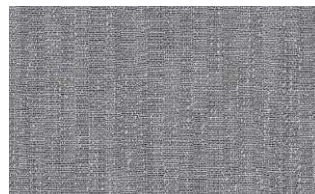
28SF4117 MAPLE



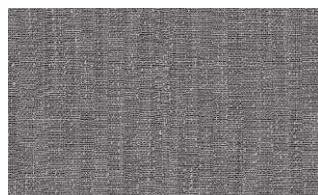
28SF4118 CANE



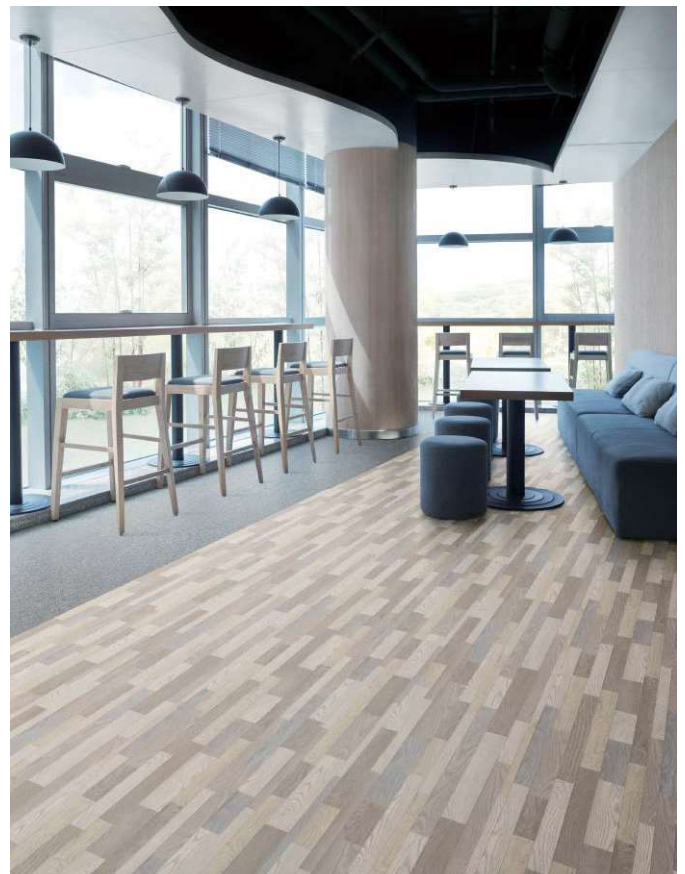
28SF4119



28SF4120



28SF4121



▲ 28SF4102/28SF4120

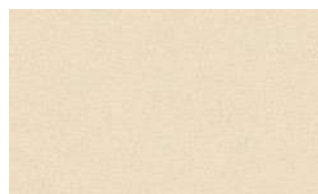
◆ **Antibacterial Performance** <in accordance with JIS Z 2801>
In JIS testing criteria, when the value is more than 2.0, the product has sufficient antibacterial property.

	Escherichia Coli	Staphylococcus Aureus	MRSA
SF FLOOR NW	More than 2.0	More than 2.0	More than 2.0

☆ Conducted by KAKEN TEST CENTER

SF FLOOR NW

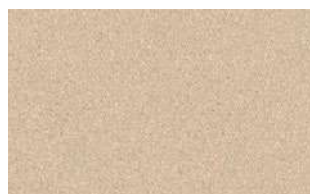
category: low-maintenance vinyl sheet
with cushion backing



28SF4122



28SF4123



28SF4124



28SF4125



28SF4126



28SF4127

LINOLEUM



28SF4128

LINOLEUM



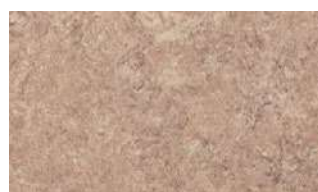
28SF4129

LINOLEUM



28SF4130

LINOLEUM



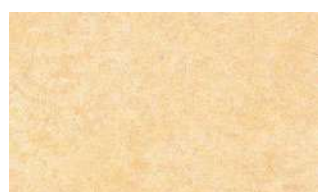
28SF4131

LINOLEUM



28SF4132

LINOLEUM



28SF4133

LINOLEUM



28SF4134

LINOLEUM



28SF4135

LINOLEUM



28SF4123



28SF4130/28SF4132

Vinyl Sheet